

# Service Connections:

## ASSIMILATION

### MISSION

*To ensure that we are connecting our members to Jesus, His word and each other; reflecting His love in word and deed.*

The purpose of this group is to improve the assimilation or integration of members into the activities of the church. This has been described as “the task of moving people from an awareness of your church to attendance at your church to active membership in your church.”

This team of people strives to accomplish its goals through various means which begins at the front doors of the Narthex.

### WELCOME CENTER

In the Narthex of the church, there is a Welcome Center for all visitors. In addition to the guest registry, there is information about our church, including regular worship times.

### NAME TAG TABLE

Someone said, “Words have meaning and names have power.” A Name Tag Table with name tags for every member is set-up in the Narthex. We ask that EVERY MEMBER wear their name tag, if you are a new member or a charter member. This is one way we continue to get to know one another. And when someone says “Good Morning...” and uses your name there is power.

### OPEN ARMS

One way of welcoming people is to throw open your arms to embrace in a big hug. To simply have open arms is seen as a welcoming gesture.

Open Arms seeks to match members of Our Redeemer with similar interests for a six month mentoring partnership. In most cases, one member is new to Our Redeemer. This pairing helps to make our new members feel welcome and informed as soon as they join our church family. With a minimal amount of time, you can offer Christian friendship and support to those new to our church.

Open Arms Goals:

1. to communicate with new members on a steady (bi-weekly is recommended) basis via phone calls, emails, notes, or invitations
2. to make new members feel a part of the Our Redeemer family
3. to seek out new members at church services and introduce them to other members
4. to provide new members with information about opportunities available at Our Redeemer
5. to look for opportunities to socialize with new members out of the church setting
6. to assist new members in becoming acquainted with life in Iowa City if they are new to the area.
7. to visit with an Assimilation Committee member about the hosting experience.

This program seeks both members looking for someone to “show them the ropes,” or introduce them to people here, and members looking to act as Hosts.

**NEW MEMBER AND MEMBER NEWS**  
**BULLETIN BOARD**

Located in the upstairs hallway to the education classrooms, across from the restrooms, you will find an interesting bulletin board. Okay, the bulletin board itself is not interesting, but upon the board you will find some great information. First, there is newsworthy information about our members. Sports and various other accolades are reported and shared here about our members. Additionally, you will find a pictorial directory of the newest members of Our Redeemer. Be sure to check this board out!

**NEW MEMBER LUNCHEON**

Twice each year, this committee hosts a luncheon to welcome all new members to Our Redeemer. Members who transferred their membership are invited! Members who went through the Basics of the Faith class and Adult Confirmation are invited! Yes, any and all new members are invited!

**ASSIMILATION PARTICIPATION**

The committee typically meets the third Tuesday of the month at 7:30 p.m. For more information, contact Teresa Fairwo at 351-6529.

**EDUCATION**

This committee works closely with the Director of Youth Ministry and Director of Children’s Education, overseeing all of Our Redeemer Lutheran Church’s educational ministries. These ministries include Sunday School, Midweek and Confirmation Classes, Vacation Bible School, Adult Bible Classes, and Kids’ Clubs. For more information, contact the church office at 338-5626.

Our Redeemer is always looking for qualified and capable teachers. Teachers are needed for Adult, Youth, and Children classes. If you are interested in being a teacher, contact the church office at 338-5626.

**ELDERS**

Carlin Parish	{A, B}
Tom Strumpel	{M, N, O}
Alan Meyer	{C, D, E}
T. J. Ramsey	{P, Q, R}
Glenn Abernathy	{F, G, T, U}
Steve Scott	{S}
Dean Hargens	{H, J}
Ryan Haack	{V, W, X, Y, Z}
Jeff Kucera	{I, K, L}

An elder must be dedicated to God’s Word and live as an example to other members. The Elders consists of eight men elected at the September voters meeting for two-year terms. The terms are staggered. So, new elders are added annually. Generally each elder serves two terms, but the second is strictly voluntary.

Elders assist with worship services in such ways as Holy Communion, Scripture reading, special prayers and Baptism.

Each elder is assigned a zone consisting of 40-60 member families. Zones are determined alphabetically by last name.

Elders communicate with their zone members by visits, mail, phone calls or an occasional chat while at church. It is the

elders' desire to keep in touch with member's spiritual and physical needs.

Each elder is responsible as a prayer partner with another committee chair and concerns himself with the spiritual welfare of the person and committee involved.

Regular elder meetings are scheduled at 7:00 p.m. on the first Tuesday of each month. For more information, contact Carlin Parish at 338-7678.

## **FAMILY LIFE**

This committee seeks to place before the congregation, on a regular basis, opportunities for Bible-centered growth events and training to assist in every aspect of family life (young couples group, parenting skills, listening skills, relationship building, family devotion resources and so on) in order that our homes would be places of joy, encouragement and growth. For more information, contact the church office at 338-5626.



## **CHALLENGE**

**November 14 and February 27**  
**12:00 p.m.**

### **What is the Trivia Challenge?**

Trivia challenges are informal, fun, competitions where teams battle to see who has the greatest knowledge of matters trivial.

General knowledge and trivial interest questions are asked by a trivia host and the winners are the team which, at the end of the event, have correctly answered the most number of questions.

### **How does the Trivia Challenge work?**

The events themselves are quite simple. You gather a group of 8 participants to form a team.

The challenge is run in rounds. During each round the host asks a series of ten questions per round. The teams discuss the answers at their table and the teams record their answers on their score sheet.

At the conclusion of each round the sheets are collected and checked for accuracy. Meanwhile, the next round of questions challenges the participants.

At the end of the second round, the marked sheets from the first round are handed back to the teams, scores for the round are posted, and then the next round of questions commences.

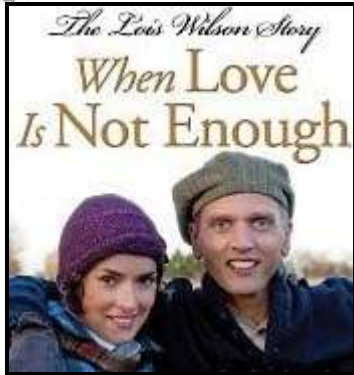
At the conclusion of the rounds, total scores are added up and prizes are awarded to the winning team.

### **What do we eat?**

We will begin this event with a potluck of appetizers and hors d'oeuvres that can be snacked upon throughout the challenge.

Invite your friends and family, form a team, and host a party where the place and the entertainment are provided.

Contact the church office at 338-5626 for more information.



**When Love is Not Enough**  
**October 17**  
**6:30 p.m.**

***When Love Is Not Enough*** stars Winona Ryder (Heathers, Reality Bites) and Barry Pepper (Saving Private Ryan, The Green Mile). It's similar to an earlier film made in the late '80s, ***My Name Is Bill W.***, which was the story of one man's journey that led to the creation of Alcoholics Anonymous.

***When Love Is Not Enough*** takes us back through that journey, but this time we experience it from his wife's perspective. Her experience helped motivate the creation of Al-Anon, which supports the families of alcoholics.

The film was shot in and around Toronto right before Christmas, and provided a unique experience for me to meet and listen to many AA members tell their own stories of how the program has helped save many of their lives. It was apparent that speaking about their own experiences is part of the healing process the program promotes, and I learned more from speaking to them on set than I ever could

have through research alone. Many members of the crew began to open up about their own experiences and how this particular subject had touched many of their lives.

The movie is a very touching story of two people who love one another so strongly that they are able to come out the other end of this very tough journey and use that experience to change the lives of countless others. I highly recommend watching the video shared here and even more interview clips on the Hallmark Hall of Fame website to see the actors describe both the story and their approach to how they captured the essence of how this important program began.

Additional Film Nights could be planned during the year. Carefully read Reflections and the Beacon to learn of such opportunities.

**Trunk-or-Treat**  
**October 24**

**4:00 p.m. – 5:00 p.m.**

What is a Trunk-or-Treat? It's when several families get together at the church, park their cars in the parking lot, open up the trunks of their cars, and kids come to each car to Trunk-or-Treat instead of going house to house to Trick-or-Treat.

First you can register your children to be Trick-or-Treaters. Second you can register your car, mini-van, or truck to give out candy. Vehicles should be decorated with a unique theme or simply for Halloween. Make sure you bring enough candy or

treats for everyone. You don't have to have children to register your vehicle. Join us for this fun event!

### **DiSC COURSE**

**February 19**

**8:00 a.m. – 12:00 p.m.**

The D.I.S.C. model, developed by William Moulton Marston and influenced by Carl Jung, profiles four primary behavioral styles, each with a distinct and predictable pattern of observable behavior. Applied in corporate, business and personal situations "DISC" can lead to understanding, better communication and heightened positive attitude. Insights into the DISC patterns have empowered millions internationally to better understand themselves and others.

## **HUMAN CARE**

Human Care is the love of God reaching out through His people, the Church, ministering compassionately to the entire spectrum of the human being — the spiritual, physical, emotional, social and economic. Its focus is that whatever work is undertaken is based on the redemptive work of Jesus and endeavors to communicate Him to others as meaningfully as possible through the help extended.

It is God's love that stimulates and sustains us in the exercise of social ministry. Social ministry is a response, not something that we initiate or generate out of our own interests or resources. It originates outside of us. It occurs as we are confronted and affected by others. It's God's love for us put into actions.

### **ANGEL TREE PROJECT**

The Angels Are Coming! Members of Our Redeemer have the opportunity to participate in serving those less fortunate through the Angel Tree Prison Ministry Project sponsored by the Human Care Committee.

Angel Tree is a program of Prison Fellowship where the children of prisoners are given Christmas gifts on behalf of the parent since he or she is unable to do so while incarcerated.

We request the names of approximately 40 children and each is represented by two angels on the tree—one for a clothing item and one for a toy or non-clothing item. The family will also be represented by an angel tag for one or two grocery certificates (depending on the size of the family). Each gift should cost no more than \$25. Each angel tag will identify the first name of the child, gender, age, sizes, gift wishes and when the gifts need to be returned to the church.

Angels will be available for selection before, after and between services beginning in the Advent season.

When you select an angel(s), you will be asked to sign out the angel with your name and phone number. Angels occasionally get lost or misplaced during the busy Holiday season, so having registering which angel you took will help to prevent someone not getting a gift. All gifts need to be wrapped and returned to the church.

### **STAR TREE PROJECT**

The Human Care Committee also sponsors the Star Tree project. This project provides gloves, mittens, scarves, and other items of warmth that are donated to

the Iowa City Community School District for needy children. The schools give them to children who need these items to get them through the cold winter. When you bring a gift, a star is added to the tree. Let's fill the tree with as many stars as we can!

### **PRIME TIME DINNER**

Each year, the Human Care Committee hosts a Prime Time Dinner for Senior Citizens at Our Redeemer

Everyone age 60 and older is invited to enjoy this Thanksgiving type dinner. Following the dinner, special entertainment will be provided.

This year, the Prime Time Dinner will be held on Sunday, November 7 following the late worship service.

### **CONTACT**

The committee meets on a monthly basis. For more information, contact Dean Johnson at 338-1954.

## **HEALTH MINISTRIES AND PARISH NURSE**

This ministry is a Christian service shaped by Christ's concern for all aspects of the human condition, and directed to the service of the whole person. Health Ministries responds to the health needs of the congregation and promotes wellness of the body, mind and spirit.

The Parish Nurse is an advocate for members who are facing health challenges. The role includes counselor, facilitator, health prevention, and referral source.

Coordinated efforts include:

- Blood Drive
- Blood Pressure and Stroke Screening
- CPR/ADE Certification
- Flu Vaccine Clinics
- Grief Support
- Hospital Discharge Planning Services

Members with health concerns who would like to visit with the Parish Nurse should contact Joyce Roberson at 358-9714 or leave a message at the church office at 338-5626. Office hours are scheduled from 8:30 a.m. until 12:30 p.m. every Friday.

## **MISSION**

The fulfilling of the Great Commission is an important segment of our church ministry. A percentage of our general budget is given for District and Synodical missions. Plus, the congregation supports special mission endeavors such as the Johnson Country Crisis Center, our sister church in Bishkek, Kyrgyzstan, Camp Io-Dis-E-Ca, Lutheran Family Services, Lutheran Hour, and Orphan Grain Train to name a few.

The Mission Committee brings in mission speakers as it seeks to inform, educate, motivate, and involve members of the congregation regarding mission work, on a national and global level.

Their work includes mission news items and support of a specific missionary or mission field. Each year, the committee plans a mission trip either in the United States or overseas for staff and laity.

To support their endeavors, the Mission Committee organizes fundraisers including a mission auction.

### **PANCAKE DAY**

Pancake Day has been a long standing tradition at Our Redeemer. Originally, Pancake Day supported our 511 Melrose mission effort. Last year, it supported the Johnson Country Crisis Center. Who will Pancake Day support this year? That is yet unknown, but suffice it to say that some mission will be supported.

**March 5, 2011**

### **CONTACT**

For more information about the Mission Committee, contact the church office at 338-5626.

### **MISSION SUNDAY**

**October 10**

Pastor Bob Pfeil will share his mission experiences from Kyrgyzstan. Pastor Pfeil will be preaching and leading the Sunday School hour.

Pastor Pfeil once served as Vicar and Pastor here at Our Redeemer. We are excited to have him back!

### **Auction**

Held every couple of years, money earned from this special event supports Our Redeemer Mission Trips.

Members and local businesses have the opportunity to donate unique and one-of-a-kind as well as various items. An auctioneer will offer the various lots to the highest bidder as well as a silent auction entices participants.

Watch the Beacon and Reflections closely for more information.

## **OUTREACH**

This committee contacts and meets with visitors who attend one or more of our worship services. The purpose is to answer questions, encourage more worship attendance and further involvement in activities of the Our Redeemer congregation. The board also administers the greeter program so that members and visitors are warmly welcomed as they come in to worship through one of the three entrances to the church building.

The Outreach Committee provides educational opportunities for people to learn how to better share their faith with anyone and everyone. It is the committee's commission to "Go and make disciples of all nations..." For information, contact Fern Parish at 338-7678.

## **PROPERTIES**

The Church Properties Committee is responsible for the upkeep and maintenance of the Church, church grounds, and parsonage. This is done through both contract and volunteer work. For more information, contact Eric Kooker at 339-0175.

## **STEWARDSHIP AND SPIRITUAL GIFTS**

As we have received many gifts from our gracious God—Time, Spiritual Gifts and Talents, Financial Resources—we are

called to be good managers of these gifts for the good of the Body of Christ. This committee encourages the members in their life of stewardship. For more information, contact Gary Johnson at 358-8972.

## **YOUTH**

This committee oversees and plans activities and fundraisers for the LYF (grades 9-12), ORKS (grades 7-8) and Jr. ORKS (Grades 5-6).

Members attend training sessions and workshops and meet monthly as scheduled.

Youth Ministry is always looking for chaperones and volunteers. Please contact the Director of Youth Ministry, Kaja Mueller at 338-5626.

## **Group Connections:**

### **MID WEEK EVENTS**

Our Redeemer Lutheran Church offers several Wednesday evening programs. These programs nurture all ages as members of God's family, the church.

This is accomplished by the grace and power of the Holy Spirit through Christian activities that encourage everyone to explore the Bible as it illumines God's path for one's life. As Psalm 119:105 says, *"Thy Word is a lamp unto my feet and a light unto my path."*

### **MID WEEK EVENING SCHEDULE**

6:00	Meal on select evenings
6:45	Pioneer Club
	Faith Explorers
	Confirmation Classes
	High School
	Adult Choir
7:00	Adult Classes
8:00	End of Evening

### **CANCELLATION**

The Mid Week Program will follow the same cancellation pattern as the Iowa City School system. If the Iowa City Schools have canceled class for the day, we will cancel any meals and classes. We will also use Channel 9 KCRG to post a cancellation.

Use your best judgment if class is not canceled and driving conditions are bad for you and your family. We recognize that many of you are dealing with different driving conditions in and outside of Iowa City.

### **REGISTRATION INFORMATION**

Registration materials are available in the church office. Scholarships are available.

### **MID WEEK MEALS**

Congregational meals are scheduled at least once per month. (These are in addition to congregational Advent and Lent meals.) Any group from Our Redeemer may sign up to host one of these meals. These groups will be responsible for cooking, set-up, serving, and clean-up. A free-will offering will be collected at the door to help cover the costs of the meal.

**Sept 1, Oct 27, Nov 17, Jan 12, Feb 16**

## COMFORT-TIERS

This is a small group of women who meet in the Fellowship Hall and tie comforters for Lutheran World Relief (LWR) and other charities.

The group meets on Thursdays from 9:00 a.m. – 12:00 p.m. Anyone is welcome to come and help tie for an hour or two or all day. We sometimes use one person to just sit and thread needles for us. We elevate the tables to prevent backaches. Bring a brown bag lunch. Coffee is provided. We often go to the IMU on the third Thursday of each month and treat ourselves to Lunch with the Chefs!

If you wish to donate towards the making of these comforters, donations of fabric are welcomed with open arms! We can use:

- Any size or condition (torn, mended, stained--just washed) of old sheets, blankets, draperies, curtains, tablecloths, pillowcases, linens. When in doubt, just donate it and we will find a place for it.
- Newer fabric such as yard lengths of 45" fabric (minimum of 3 1/2 yards while 60" fabric requires 2 1/2 yards) or newer sheets or draperies.
- Sewing scraps of any size. Even satiny linings and other silky fragile materials go into the 'middles' for a third layer that helps sift out sand during sand storms if that particular comforter goes to a desert area.
- Unmendable or outdated clothing: We tear out the backs of the legs of slacks. We cut off seams of shirts and blouses, even T-shirts, etc. to use the fabric. Some of our comforter tops have

pockets included on them and/or a button or two. Lace sometimes covers a worn spot for extra strength.

- Old blankets: We remove as much of the wires as possible from electric ones. Worn old ones go into the comforters as 'middles'.
- Yarn to tie with, preferably baby or sport weight (2 or 3-ply yarns). Any 4-ply that is too heavy to thread our needles is used for crocheting baby sweaters for LWR or knit caps for UI Hospital babies.
- Sewing thread (not quilting thread) of any color, any leftover or new spools.

Monetary donations are always welcome. Make checks payable to Our Redeemer Women's Mission Guild and enter for the Comfort-tiers on the Memo line.

You can give the check to any active Guild member. We shop at thrift stores, store sales, and garage sales to make the money go further. Or you might like to shop yourself. Questions? Call Lillian Moyer at 354-5644 or Carol Schuldt at 338-4806. Thank you!

## THE G THREES (GUYS GROWING IN GOD)

Men of Our Redeemer and our community who meet for a monthly morning breakfast and practical life application Bible study on the first Saturday of each month at 7:00 a.m at HyVee.

The goals are to equip men, enabling them to move toward mature discipleship of Jesus Christ and to serve their church, family and community more fully.

Other activities include trips to major men's conferences, local Hawkeye events, concerts and service events for the church and community.

This men's group is open to all men. Contact Tom Strumpel at 627-4322.

## **LUNCH BUNCH**

This is a group of approximately 20 members who meet every other Wednesday at 11:30 a.m. for lunch in the church fellowship hall or other places the group wishes to visit. There is a short devotion followed by lunch and a brief group meeting to share ideas and plans for the next meeting. Members and friends of all ages are welcome.

The main dish is provided. People bring potluck or contribute toward the cost of the main dish. For more information, contact the Jahnkes at 337-9294 or the Schweers at 337-6999

*... as newborn babies, desire the pure milk of the word, that you may grow thereby,*  
1Peter 2:2

Before you feed on food for your physical body, come early to the Mid-Week Bible study. By feeding on God's word we will become mature Christians. As believers we have a hunger that can only be satisfied by God's word, anything else will leave us feeling hungry. So join us at 11:00 a.m. as we study the Gospel of Luke verse by verse.

## **LUTHERAN LAYMAN'S LEAGUE (LLL)**

In 1917, a group of 12 men attending a convention of The Lutheran Church-Missouri Synod in Milwaukee met to settle a \$100,000 debt incurred by the church body. They accomplished that goal, and in the process formed the Lutheran Laymen's League (LLL). The LLL next raised more than \$2.7 million to fund a pension plan for professional church workers.

This men's group exists at Our Redeemer. Members of LLL meet the fourth Tuesday of each month at 7:30 p.m. for business, special programs, and fellowship.

This group hosts several dinners during the year. The LLL Steak Cookout is on Tuesday, August 25 at 6:30 p.m. This cookout will be here at Our Redeemer. Men bring their own meat and a dish to share. The coals on a hot grill will be ready.

One important outreach ministry this group supports is 511 Melrose, the meeting place for Iowa City Alcoholics Anonymous groups.

All men over age 18 are encouraged to join. Contact Jerry Sexton at 629-5422 for more information.

## **WOMEN'S MISSION GUILD (LWML)**

### **MISSION**

*The mission of the Lutheran Women's Missionary League is to assist each woman of The Lutheran Church – Missouri Synod in affirming her relationship with the Triune God so that she is enabled to use her gifts in ministry to the people of the world.*

Our Redeemer's Women's Mission Guild is a part of the International Lutheran Women's Missionary League, known as LWML. For over 65 years the LWML has focused on affirming each woman's relationship with Christ, encouraging and equipping women to live out their Christian lives in active mission ministries and to support global missions.

**OUR PURPOSE** is...

- To help women grow spiritually;  
MISSION INSPIRATION
- To encourage and equip women to reach out in love;  
MISSION EDUCATION
- To provide opportunities for helping others;  
MISSION SERVICE

**OUR GOAL** is to involve all women of Our Redeemer in affirming her relationship with God so she is enabled to use her gifts in serving the Lord with gladness. We like to refer to ourselves as Lutheran Women in Mission.

**MEETINGS**

Our Lutheran Women Missionary League ladies group has evolved into two circles.

The evening group meets every third Monday of the Month at 7:00 p.m. in the church Fellowship Hall. Typically, at the meetings, we have a devotion, bible study, speaker or mission project, and a snack.

The morning group meets every fourth Monday morning at 10:00 a.m. in the church board room. Typically, at the meeting, we have Bible study, fellowship, and prayer. Bring your own beverage if you desire, as this is a "no-host" meeting.

**LWML MISSION GROUPS**

Within this group are many smaller groups that serve our congregation in the mission to further the Word. These sometimes are ordinary things. You can send a faith based greeting card from our Card Shop or assist the church library ladies in processing new items.

We have a faithful group of ladies that help serve at funeral lunches or other serving events.

One of our most productive groups is the Comfort-tiers. This dedicated bunch of stitchers can provide World Relief or local charities with more comfort quilts than you could imagine. World Relief efforts are a big part of our mission here. We have two large donations every year.

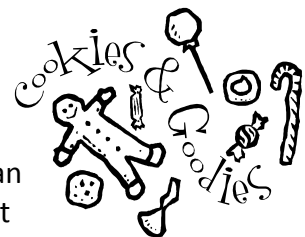
**SUPPORTING MISSIONS**

Through our two major annual fun-d raisers-the Cookie Walk in December and the Tasting Bee in the spring-we provide funds to several local, national, and international mission projects. One of them being camperships to Camp Io-Dis-E-Ca for Our Redeemer members.

**HOLIDAY COOKIE WALK**

*December 4*

On the first Saturday of December the LWML hosts a Cookie Walk. Dozens upon dozens of cookies, every kind you can think of cover over 80 feet of table space. These cookies are sold for \$6 per pound. If you think the line-up of cookies is long, you should see the line-up at the door. Each year, literally hundreds of people come for these wonderful treats.



Your help is needed:

1. Pray that the attendees might see Christ's light in us while they are shopping.
2. Pull out your favorite recipes and prepare to bake. We encourage each family to bake four or more dozen cookies. If you like a challenge, bake one more dozen than you did last year.
3. Help advertise by placing posters at your workplace and/or local shops.
4. Prayerfully consider giving of your time to assist with set-up, greeting our guests, or cleaning up the crumbs left behind.

### **TASTING BEE**

***April 9, 2011***

#### **What is a "Tasting Bee"?**

1. It is a fundraiser for Missions.
2. It is an outreach to women in the congregation and beyond.
3. It is a fun time "tasting" the 30+ recipes prepared by the women.

The attendees are seated at a table which has been decorated, according to the Tasting Bee's theme. The Fellowship Hall is filled with many table decorated with the theme of the year.

There are door prizes! And everyone attending receives a cookbook containing all the recipes of the dishes presented that day.

Everyone attending must purchase a ticket. The tickets sell very quickly, so those who prepare food or decorate a table have first chance to purchase. Don't miss out on this fun event!

### **MITE BOX**

Maybe you have noticed a very large purple and white box in the church office. This is our "Mite Box". Recall the Biblical

account of the poor widow who gave two very small copper coins, worth only a fraction of a penny. Calling his disciples to him, Jesus said, *"I tell you the truth, this poor widow has put more into the treasury than all the others. They all gave out of their wealth; but she, out of her poverty, put in everything—all she had to live on."*

Mark 12:43-33.

These are the pennies, nickels, dimes and quarters saved from day to day. Mite boxes have changed in color and design over the



years, but what has never changed is the dedication of freely given offerings for the purpose of reaching out to others with the Good News of Jesus Christ. 75% of these monies go to the LWML District East for their biennial mission projects, the other 25% goes to the National organization for their biennial mission projects.

### **WATCH FOR EVENTS!**

Meetings and events will appear in the Reflections and Beacon. Please plan to attend any get-together; you are already a member!

### **CONTACT**

Any questions, contact Kathy Huedepohl at 354-0480.

## **SPORTS MINISTRIES**

This is another opportunity for Christian fellowship at Our Redeemer. This past year we have participated in church league co-ed softball. We will be looking for more opportunities in the future and would love to have you join us! Contact the church office for more information (338-5626).

## WOMEN OF FAITH CONFERENCE



**May 13-14, 2011**

**Friday 10:00 AM – 3:30 PM, 7:00 – 10:00 PM**

**Saturday 9:00 AM – 5:00 PM**

**Wells Fargo Arena, Des Moines  
Hotel Reservations at Quality Inn**

Imagine what it would be like if the God who created us was willing and able to provide exactly what we need. God is bigger than you think...loves you more than you ever dreamed...and is ready and able to go beyond your expectations. Why would He do that? Because He loves us. He loves YOU. Imagine that. Find out what that means for YOU in 2011 at two life-changing days of laughter, music, stories and time with the God who loves you more than you can ever Imagine. Don't miss it!!

## Worship Connections:

### ADVENT AND LENTEN SUPPERS

All are invited to come! During the Advent and Lent seasons, various groups and individuals prepare dinner for the congregation prior to these special worship services.

Advent dinners are on the three Wednesdays prior to Christmas, and Lenten dinners are on the five Wednesdays prior to Easter.

Dinner is served at 5:30 p.m. with the special worship service at 6:10 p.m. There is no cost, only a free will donation to cover expenses.

### LENTEN PRAYER WALK

Lent is a time of reflection. Join us for a time of focused prayer. In small groups or individually, journey from prayer station to prayer station focusing on the life and death of our Savior, Jesus Christ. This prayer walk is specifically placed in the middle of Passion Week.

### ACOLYTES

It is expected that all students serve as acolytes during confirmation, grades 6-8.

The word "acolyte" means "follower" or "attendant". It refers to the fact that the